

South Hams Rural Masterplanning Template

Client: South Hams District Council, Devon

David Orr was asked by CABE and South Hams District Council to come up with a 'template' document to help communities, parishes and developers of all kinds to masterplan development that is proposed under site allocation plans set out by the council. Most of these development sites are rural village additions, or are extensions and infill development to some of the modest but distinctive market towns of South Devon.

The template document was devised with a steering group of interest groups from the district including the Parish Council umbrella body, community council for Devon, Transition Towns, south west House Builders Federation etc. The document, which it was decided should become a Supplementary Planning Document, advises users on both the design process (including who and how to involve people) and on the key issues in design and design appraisal to be addressed through the life of the project.

The template includes advice at each work stage of a masterplan from diagnosis when starting out to pre-application collaborative discovery and design, to planning and delivery and to then developing a legacy.

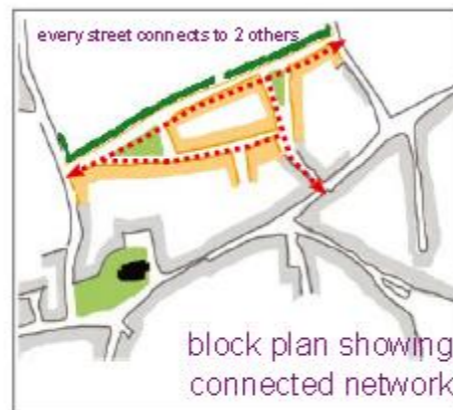
2011



3D diagrams used to illustrate plot types

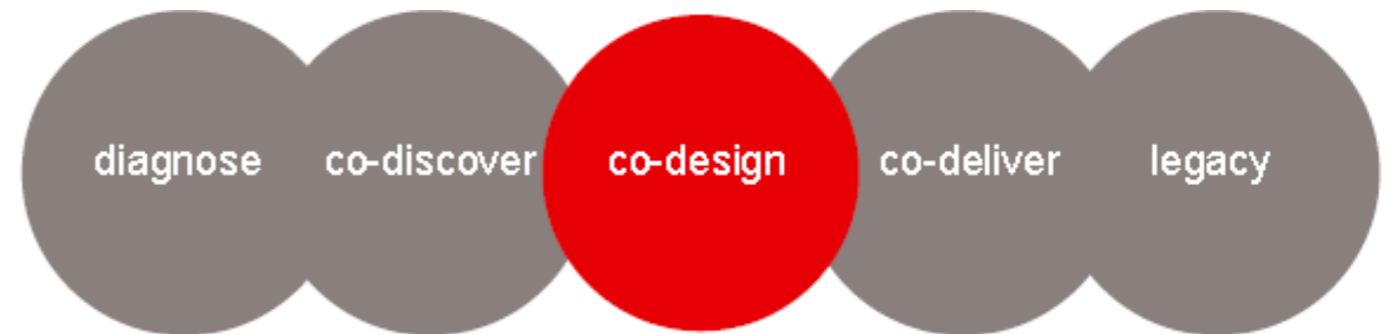
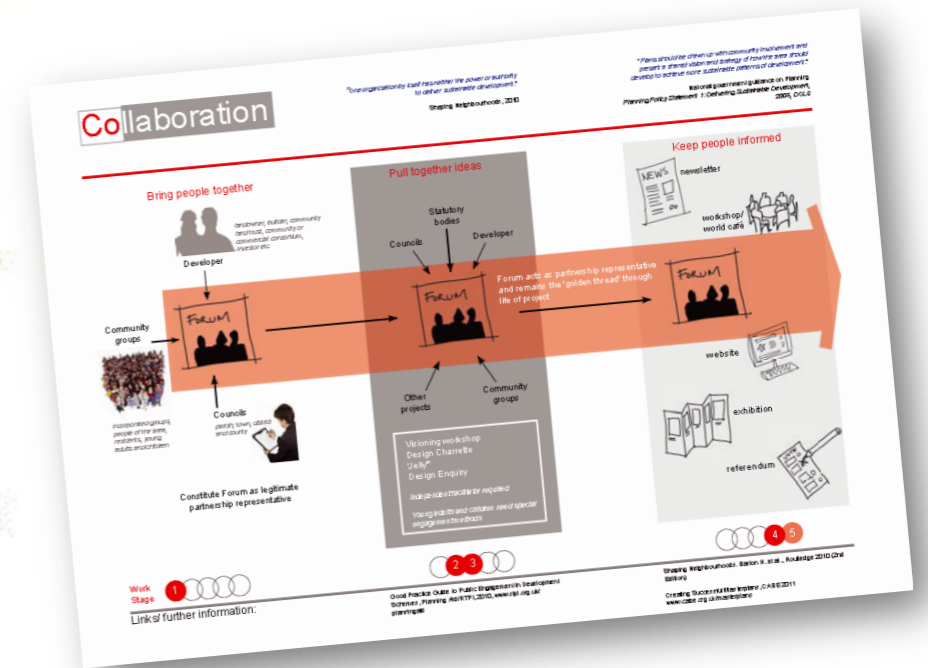


walkable neighbourhood



block plan showing connected network

Typical plans from this stage for a small settlement



Contact: David Orr

Hill House, Venslooe Hill, Liskeard, Cornwall, PL14 6BJ
m. 07792 945147

e. david@davidorrconsulting.net
www.davidorrconsulting.net

David Orr Consulting

Urban Design and Landscape Architecture