

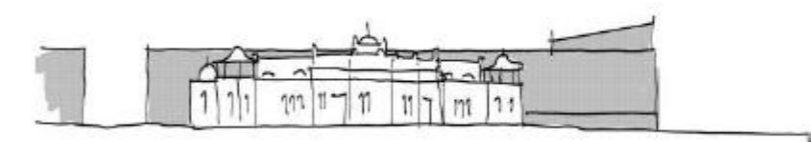
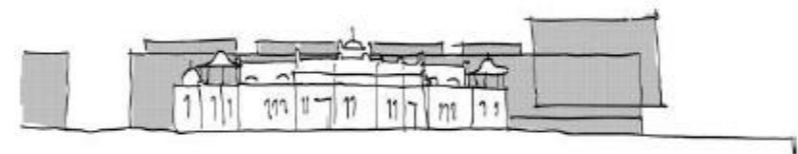
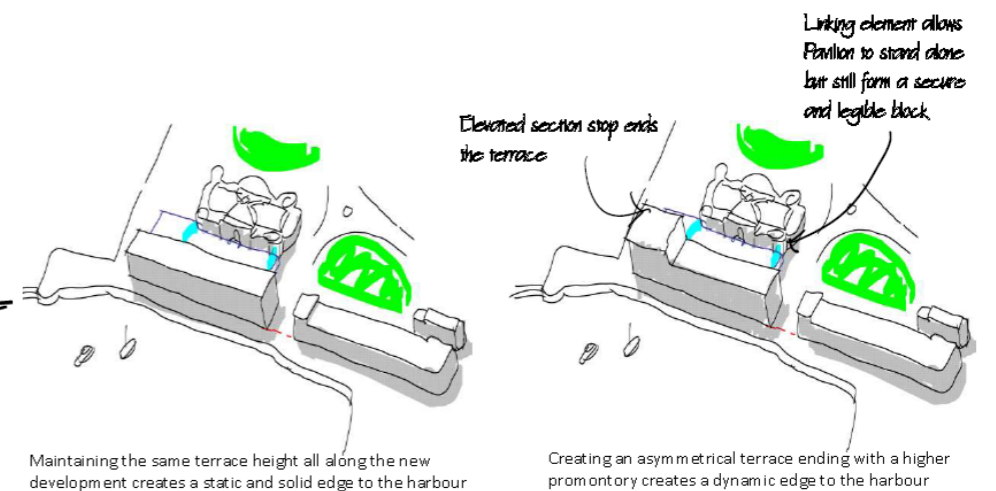
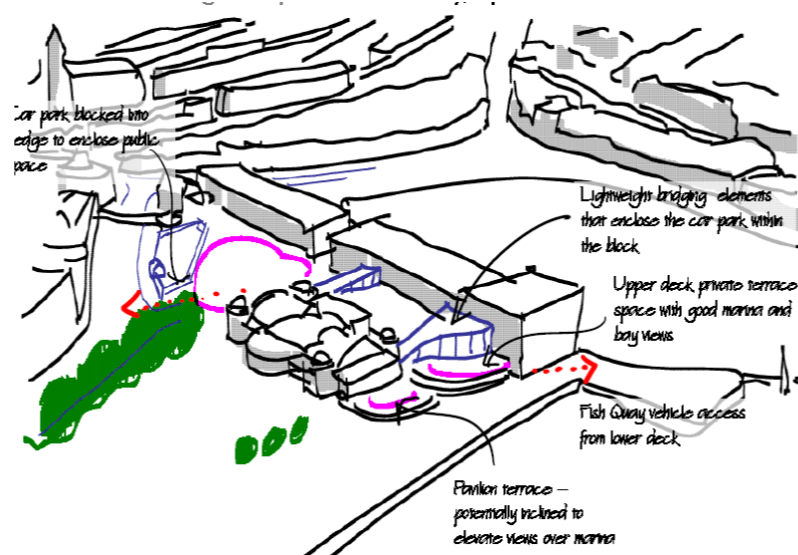
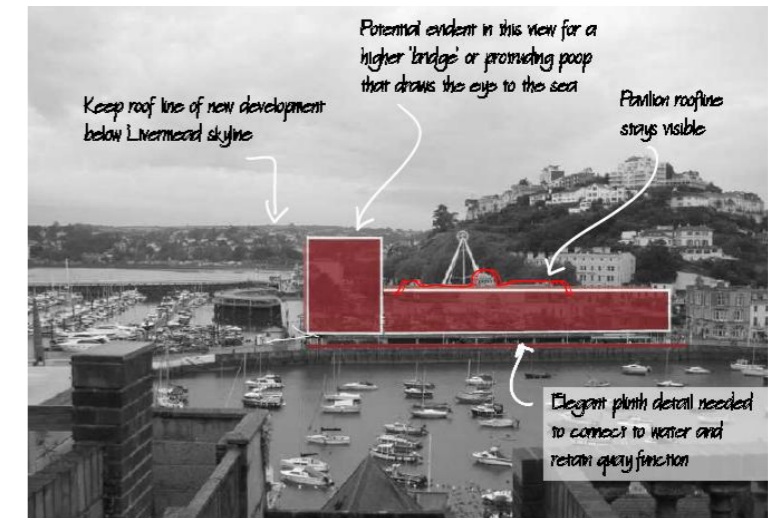
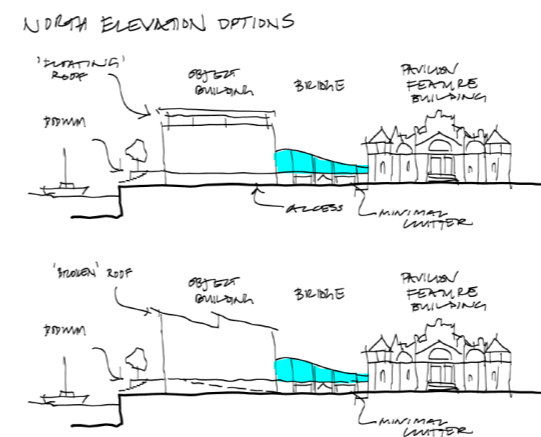
# Torquay Pavilion

Client: NJG Properties and Kay Elliott Architects

Working with English Heritage, the council conservation and heritage officers and the design team, David Orr was appointed to help the architects formulate a robust and meaningful urban design approach to a development proposal that will help to rescue a prime heritage asset and sensitively alter a highly visible site at the mouth of the harbour.

Torquay's unique hillfronted harbourside is adorned with villas and stripes of bold Victorian terraced buildings. Over the years the town has reclaimed parts of the sea and extended the foreshore adjoining the harbour to create the Princess Gardens, an Edwardian winter holiday landscape of exotic plants and swirling lawns. Near the turn of the twentieth century the borough surveyor erected a Raj-inspired Pavilion at the end of the gardens, masking what was then a working fish wharf on the harbour. During the late twentieth century the wharf was converted to a decked car park and the listed Pavilion has suffered from lack of investment as it has declined in use to the present.

The task was to analyse the site and perceive on behalf of the design team a justifiable urban design approach to the development project, one that took into consideration the multiple site and viability constraints whilst setting some realistic and townscape-enhancing design parameters. The study emerged with a series of design logic and massing diagrams as well as explanatory design concepts for public space and movement proposals. The study is to be used as a basis for the design exploration set out in the Design and Access Statement to go with the planning application.



Contact: David Orr

Hill House, Venslooe Hill, Liskeard, Cornwall, PL14 6BJ  
m. 07792 945147

e. [david@davidorrconsulting.net](mailto:david@davidorrconsulting.net)  
[www.davidorrconsulting.net](http://www.davidorrconsulting.net)

David Orr Consulting

Urban Design and Landscape Architecture